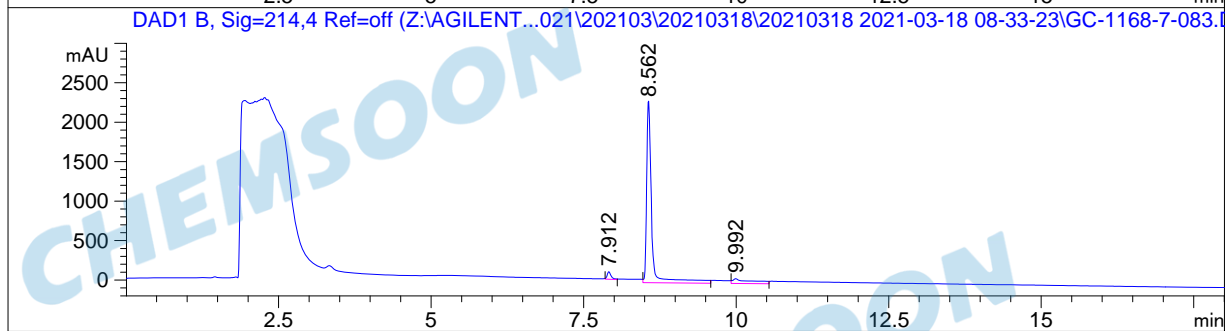
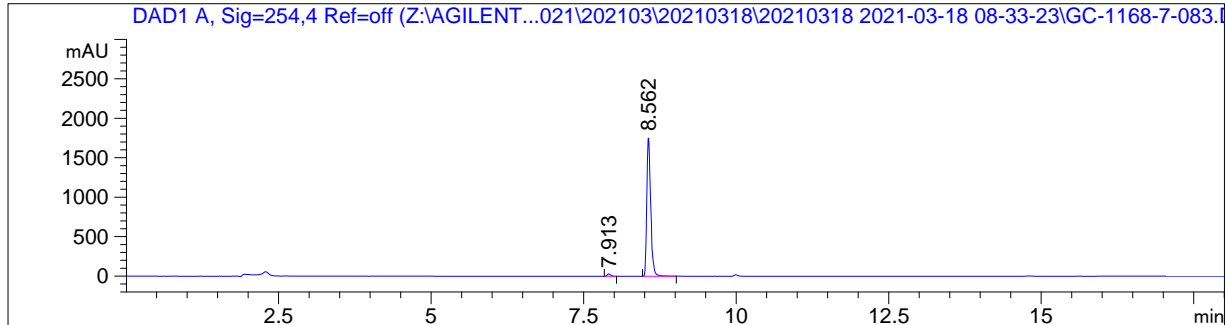


```

=====
Acq. Operator   : 系统                               Seq. Line :   18
Acq. Instrument : Agilent 1200                       Location  : Vial 16
Injection Date  : 3/18/2021 3:53:35 PM              Inj       :    1
                                                    Inj Volume: 5.000 µl
Different Inj Volume from Sequence !      Actual Inj Volume : 3.000 µl
Acq. Method     : D:\DATA\2021\202103\20210318\20210318 2021-03-18 08-33-23\HPLC-1200-A2.M
Last changed    : 3/18/2021 8:33:23 AM by 系统
Analysis Method : C:\CHEM32\1\METHODS\DEF_LC.M
Last changed    : 3/18/2021 5:18:12 PM
                  (modified after loading)
  
```



=====
 Area Percent Report
 =====

```

Sorted By      :      Signal
Multiplier:    :      1.0000
Dilution:      :      1.0000
Use Multiplier & Dilution Factor with ISTDs
  
```

Signal 1: DAD1 A, Sig=254,4 Ref=off

Peak #	RetTime [min]	Type	Width [min]	Area [mAU*s]	Height [mAU]	Area %
1	7.913	BV	0.0614	121.73599	29.93978	1.5317
2	8.562	VB	0.0679	7825.95166	1760.79456	98.4683

Totals : 7947.68765 1790.73434

Signal 2: DAD1 B, Sig=214,4 Ref=off

Peak #	RetTime [min]	Type	Width [min]	Area [mAU*s]	Height [mAU]	Area %
1	7.912	MM R	0.0528	424.86908	95.62142	2.8099
2	8.562	VV	0.0877	1.33832e4	2306.45044	88.5110
3	9.992	VV	0.2680	1312.29895	60.26830	8.6790

Totals : 1.51203e4 2462.34016

=====
*** End of Report ***

CHEMSON

CHEMSON

CHEMSON