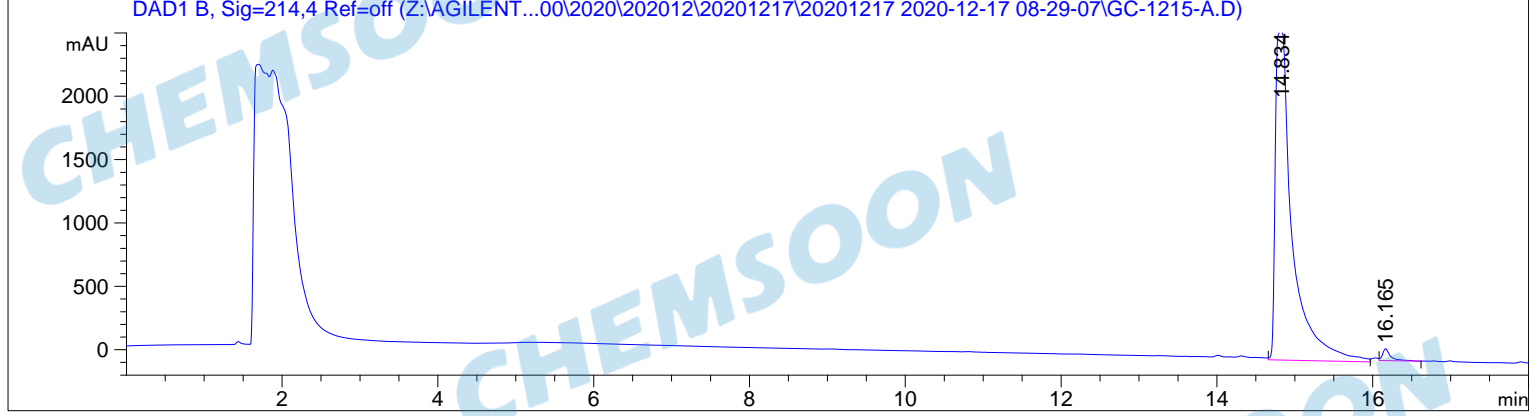
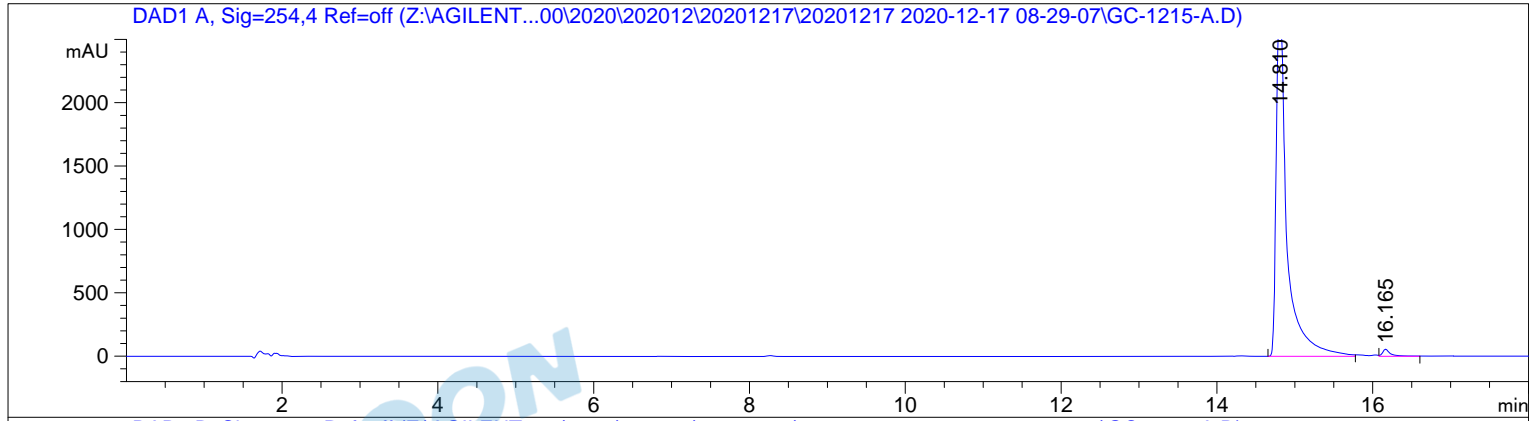


```

=====
Acq. Operator   : 系统                               Seq. Line :   20
Acq. Instrument : Agilent 1200                       Location  : Vial 1
Injection Date  : 12/17/2020 4:15:22 PM             Inj       :    1
                                                    Inj Volume: 5.000 µl
Different Inj Volume from Sequence !      Actual Inj Volume : 8.000 µl
Acq. Method    : D:\DATA\2020\202012\20201217\20201217 2020-12-17 08-29-07\HPLC-1200-A2.M
Last changed   : 12/17/2020 8:29:07 AM by 系统
Analysis Method : C:\CHEM32\1\METHODS\DEF_LC.M
Last changed   : 12/17/2020 11:54:06 AM
                (modified after loading)
  
```



Area Percent Report

```

Sorted By      :      Signal
Multiplier:    :      1.0000
Dilution:      :      1.0000
Use Multiplier & Dilution Factor with ISTDs
  
```

Signal 1: DAD1 A, Sig=254,4 Ref=off

Peak #	RetTime [min]	Type	Width [min]	Area [mAU*s]	Height [mAU]	Area %
1	14.810	BV	0.1442	2.61764e4	2673.91846	98.5087
2	16.165	VV	0.1032	396.27164	55.54892	1.4913

Totals : 2.65726e4 2729.46738

Signal 2: DAD1 B, Sig=214,4 Ref=off

Peak #	RetTime [min]	Type	Width [min]	Area [mAU*s]	Height [mAU]	Area %
1	14.834	MM R	0.2535	3.94218e4	2591.56177	98.3407
2	16.165	VV	0.1035	665.15808	92.97975	1.6593

Totals : 4.00869e4 2684.54152

=====
*** End of Report ***

CHEMSOON
CHEMSOON
CHEMSOON