



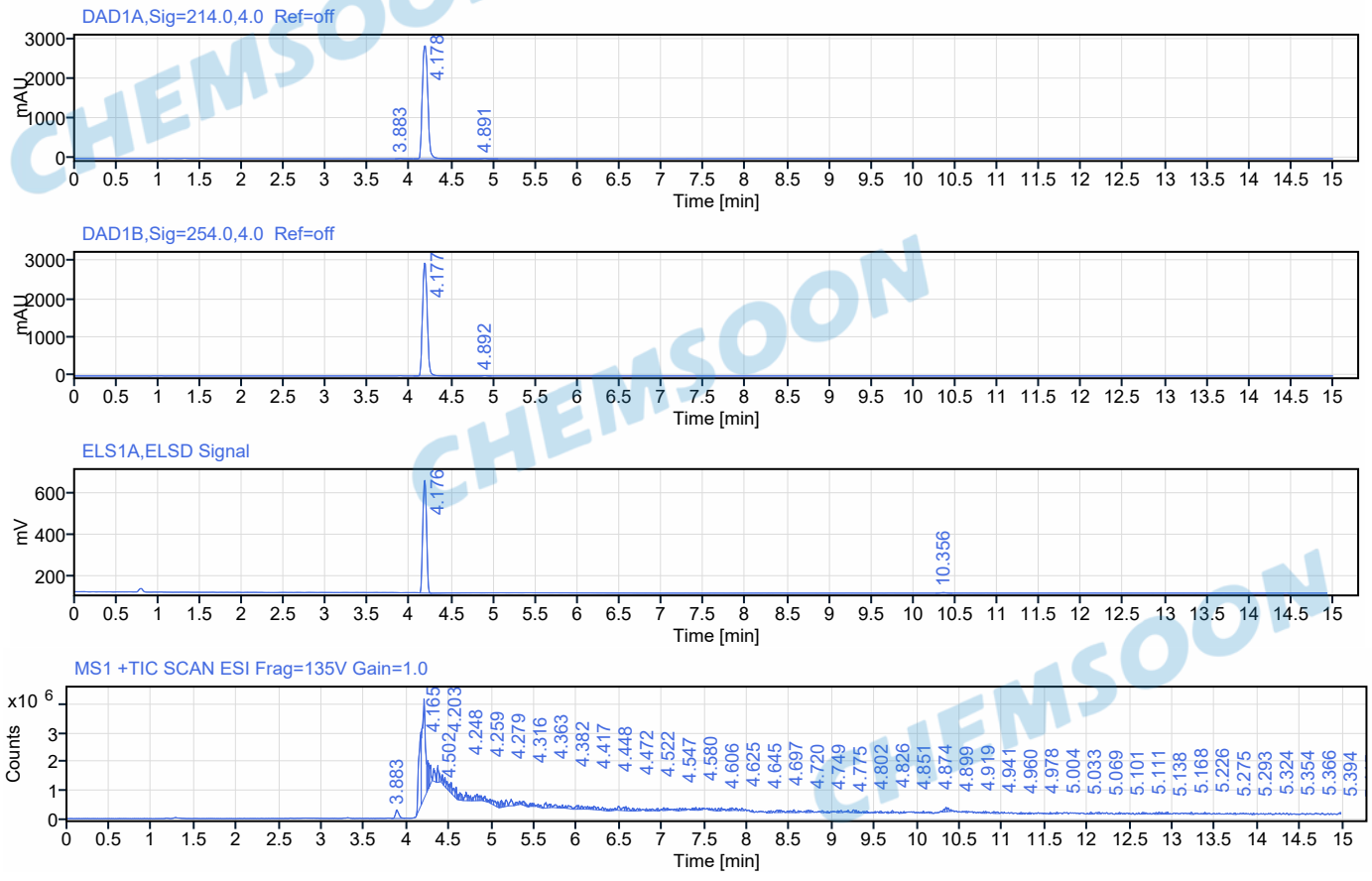
Sequence Name: SingleSample
Data file: S006614.dx
Sample name: S
Instrument: ARD-102
Inj. volume: 1.000
Acq. method: 5-95-15MIN.amx
Processing method: 5-95-15min.pmx
Data Path D:\CDSPProjects\WalkUpProject\Results\HPLC\2020-04-21\S006614.sirslt

Project Name: WalkUpProject
Operator : HPLC
Acquired on: 2020-04-22 00:20:13+08:00
Location: D1F-C4

Data Analysis Method: 5-95-15min.pmx
Path: D:\CDSPProjects\WalkUpProject\Methods

Method Information

Last Saved As: D:\CDSPProjects\WalkUpProject\Methods\5-95-15min.pmx
Modified: 2020-04-20 15:46:09+08:00
Modifier: admin
Created: 2019-03-22 09:33:14+08:00
Creator: zuoyanjun
Description: Mobile Phase: A:H2O(10mmNH4HCO3) B:ACN
Gradient: 5%-95%B in7min
Flow Rate: 1.2ml/min
Column: Waters XBridge 4.6*100mm,3.5um
Oven Temperature: 40C
MASS Range:100-1000
Version: 2020-0420-0746-04150
Type: MS



Signal: DAD1A, Sig=214.0,4.0 Ref=off

RT [min]	Width [min]	Area	Height	Area%	Plates
3.883	0.213	21.444	7.104	0.165	37775
4.178	0.771	12956.853	2871.239	99.559	20454
4.891	0.239	35.932	10.031	0.276	45401
Max		12956.8532			

Signal: DAD1B, Sig=254.0,4.0 Ref=off

RT [min]	Width [min]	Area	Height	Area%	Plates
4.177	0.779	11493.062	2963.504	99.728	25771
4.892	0.151	31.333	9.975	0.272	53612
Max		11493.0619			

Signal: ELS1A, ELSD Signal

RT [min]	Width [min]	Area	Height	Area%	Plates
4.176	0.144	1738.367	555.113	99.343	39009
10.356	0.200	11.491	2.537	0.657	114860
Max		1738.3665			

Sample Purity - Detailed Report



Agilent Technologies

Signal: MS1 +TIC SCAN ESI Frag=135V Gain=1.0

RT [min]	Width [min]	Area	Height	Area%	Plates
3.883	0.158	816331.855	295433.644	2.042	45998
4.165	0.060	5113370.847	2572468.085	12.790	26263
4.203	0.067	9479471.783	3511948.338	23.710	93120
4.248	0.019	1038846.972	1034070.017	2.598	131112
4.259	0.011	508057.288	871964.314	1.271	165085
4.279	0.032	827272.758	663405.246	2.069	67933
4.316	0.050	693678.849	447318.910	1.735	179457
4.363	0.031	638283.715	594625.574	1.596	526431
4.382	0.022	277074.188	324141.045	0.693	356509
4.417	0.032	281331.132	315770.468	0.704	677072
4.448	0.028	329575.032	329763.095	0.824	543652
4.472	0.026	309943.253	266192.967	0.775	399903
4.502	0.022	259114.642	268461.027	0.648	398114
4.522	0.023	389449.978	376901.913	0.974	526140
4.547	0.036	459754.187	249324.393	1.150	237298
4.580	0.026	362279.649	401823.589	0.906	513820
4.606	0.018	133402.211	197578.195	0.334	808764
4.625	0.027	327902.064	256082.053	0.820	
4.645	0.023	176692.679	210097.134	0.442	327004
4.697	0.049	456936.620	309598.856	1.143	358852
4.720	0.021	196537.022	200193.531	0.492	456641
4.749	0.027	180335.358	188575.892	0.451	698791
4.775	0.018	62631.922	124335.282	0.157	1040314
4.802	0.031	258253.988	180183.476	0.646	165272
4.826	0.026	275110.417	233643.506	0.688	144284
4.851	0.024	195853.812	184427.624	0.490	605093
4.874	0.028	177200.625	171656.102	0.443	489290
4.899	0.012	66538.386	120657.982	0.166	1059843
4.919	0.033	209977.887	175369.544	0.525	662478
4.941	0.016	56716.570	114733.983	0.142	2686663
4.960	0.019	60885.357	79456.615	0.152	668326
4.978	0.020	129679.299	140169.644	0.324	926947
5.004	0.030	207375.744	163235.540	0.519	649402
5.033	0.038	306745.781	172892.335	0.767	120382
5.069	0.026	203300.395	203820.663	0.508	511096
5.101	0.020	157398.518	221002.777	0.394	762660
5.111	0.023	244281.062	253224.508	0.611	445595



RT [min]	Width [min]	Area	Height	Area%	Plates
5.138	0.021	135480.269	146538.747	0.339	690796
5.168	0.045	375229.374	232858.620	0.939	234163
5.226	0.064	452674.518	236043.597	1.132	112318
5.275	0.019	62245.345	101924.933	0.156	682918
5.293	0.030	130963.941	101477.440	0.328	576114
5.324	0.031	110492.158	121543.066	0.276	757331
5.354	0.019	74839.154	110976.213	0.187	395669
5.366	0.030	203616.916	136564.620	0.509	246316
5.394	0.017	75155.116	118505.302	0.188	970052
5.415	0.018	51358.504	72149.148	0.128	1401525
5.448	0.028	94785.988	105561.283	0.237	923710
5.470	0.025	94892.853	116182.196	0.237	1399907
5.489	0.030	110118.790	100470.242	0.275	667307
5.543	0.027	101397.181	105581.854	0.254	377471
5.572	0.045	131632.432	95446.656	0.329	650796
5.634	0.048	316158.463	199316.746	0.791	268816
5.672	0.032	167424.931	124308.158	0.419	50662
5.691	0.026	120614.640	119461.221	0.302	639186
5.739	0.062	238335.457	107243.715	0.596	326513
5.793	0.042	97733.952	72024.490	0.244	330260
5.829	0.033	97624.785	110361.967	0.244	
5.868	0.023	79014.023	99736.044	0.198	1029391
5.901	0.070	287047.704	110666.950	0.718	126474
5.996	0.050	226085.642	134379.678	0.565	212942
6.016	0.030	146077.821	142277.776	0.365	455753
6.054	0.032	132290.594	119202.365	0.331	756573
6.099	0.035	137594.604	88310.643	0.344	441010
6.126	0.028	98138.689	106917.224	0.245	998569
6.151	0.021	73728.468	90637.379	0.184	1059092
6.178	0.028	110778.617	85425.729	0.277	786172
6.199	0.035	182047.835	120472.517	0.455	404585
6.247	0.037	137823.268	103750.549	0.345	622482
6.299	0.035	140303.349	116952.324	0.351	1007634
6.331	0.038	123572.685	85481.945	0.309	402571
6.361	0.020	52377.761	72899.461	0.131	1680574
6.389	0.029	83677.925	77684.964	0.209	617185
6.419	0.020	59350.018	66303.930	0.148	1426065
6.450	0.033	93473.931	74341.451	0.234	965452



RT [min]	Width [min]	Area	Height	Area%	Plates
6.489	0.059	272932.569	149887.541	0.683	344189
6.551	0.044	211475.246	119069.041	0.529	426591
6.574	0.026	153595.852	151361.566	0.384	914635
6.602	0.049	180504.902	114284.170	0.451	501866
6.654	0.027	96670.912	99590.603	0.242	962357
6.671	0.019	57936.399	74404.094	0.145	1039665
6.712	0.043	115312.976	84498.651	0.288	639362
6.736	0.025	65341.501	81390.986	0.163	1087500
6.814	0.030	86204.089	80842.426	0.216	1629857
6.854	0.039	91635.718	60215.936	0.229	1143775
6.883	0.052	113764.260	72834.609	0.285	350353
6.935	0.024	67171.390	73041.785	0.168	759185
6.950	0.021	77905.327	94406.577	0.195	1138531
7.018	0.028	109423.588	105564.761	0.274	941719
7.040	0.023	69908.472	73635.466	0.175	1140173
7.065	0.023	63957.790	78863.879	0.160	1332446
7.145	0.037	74428.990	51056.081	0.186	1771816
7.177	0.025	60452.433	78678.694	0.151	1142324
7.208	0.033	107722.581	96492.652	0.269	797206
7.241	0.031	68316.774	81084.323	0.171	2697380
7.272	0.029	78673.364	74721.732	0.197	1045636
7.358	0.028	69767.347	70241.351	0.175	850320
7.370	0.018	61029.445	64530.817	0.153	1178658
7.397	0.041	123387.520	96238.191	0.309	1239965
7.438	0.024	67393.397	76726.068	0.169	1887710
7.473	0.031	74328.472	56286.118	0.186	1403311
7.557	0.030	72790.214	60522.634	0.182	1942222
7.586	0.031	66410.552	65515.764	0.166	1323733
7.629	0.041	113137.757	83622.103	0.283	717363
7.668	0.039	113635.510	95838.545	0.284	1157970
7.699	0.025	94276.168	109095.456	0.236	1674003
7.786	0.017	52349.499	57834.003	0.131	824186
7.799	0.020	81270.828	80736.752	0.203	1020878
7.822	0.042	147293.732	94516.675	0.368	446144
7.869	0.045	116548.494	82557.625	0.292	635123
7.938	0.045	126254.200	88681.901	0.316	820313
8.061	0.038	72489.959	66721.537	0.181	957309
8.250	0.033	87888.775	64418.366	0.220	832432



RT [min]	Width [min]	Area	Height	Area%	Plates
8.279	0.034	97645.283	71381.052	0.244	906153
8.354	0.045	139336.240	82640.021	0.349	561835
8.379	0.021	82610.453	79796.517	0.207	1488598
8.400	0.030	96601.956	74769.167	0.242	712026
8.477	0.046	76709.320	55858.440	0.192	947615
8.504	0.044	108816.140	69125.832	0.272	2844263
8.547	0.033	108449.311	94054.020	0.271	1323012
8.601	0.044	80276.433	63873.627	0.201	1150786
8.698	0.021	54508.105	72750.068	0.136	2372497
8.722	0.033	111052.559	84291.692	0.278	651802
8.745	0.022	61990.167	74933.612	0.155	2084477
8.882	0.040	101376.614	76240.535	0.254	1021991
8.948	0.041	80731.504	56377.894	0.202	765788
9.064	0.021	56837.220	64985.397	0.142	3451633
9.104	0.050	122376.719	71071.665	0.306	510094
9.187	0.042	85249.508	74342.573	0.213	1671298
9.251	0.054	156926.323	94586.312	0.393	617795
9.279	0.026	91110.432	84207.899	0.228	1660991
9.309	0.025	60598.676	68460.420	0.152	2189569
9.377	0.030	74904.694	54912.171	0.187	4069867
9.405	0.058	107303.664	65056.988	0.268	862636
9.503	0.043	58237.097	52218.024	0.146	2713245
9.570	0.050	115731.912	60328.995	0.289	484773
9.652	0.024	54404.173	53804.151	0.136	1788417
9.706	0.036	91743.604	82364.919	0.229	2069777
9.801	0.038	59753.314	54137.225	0.149	2965695
9.844	0.036	53913.919	57373.477	0.135	2413029
10.069	0.041	78983.840	71752.181	0.198	2344252
10.146	0.063	98325.632	52773.376	0.246	150024
10.315	0.034	111003.293	91135.202	0.278	1050455
10.337	0.027	181056.777	153665.281	0.453	1880115
10.360	0.034	180670.998	133202.541	0.452	993470
10.393	0.026	63549.683	61494.436	0.159	2254437
10.575	0.029	61681.204	54096.717	0.154	3397737
10.779	0.043	83128.923	57161.569	0.208	1918537
10.804	0.026	70313.206	67280.336	0.176	3824987
10.902	0.030	80836.611	60733.647	0.202	2357873
10.943	0.051	108233.199	57463.818	0.271	1581852



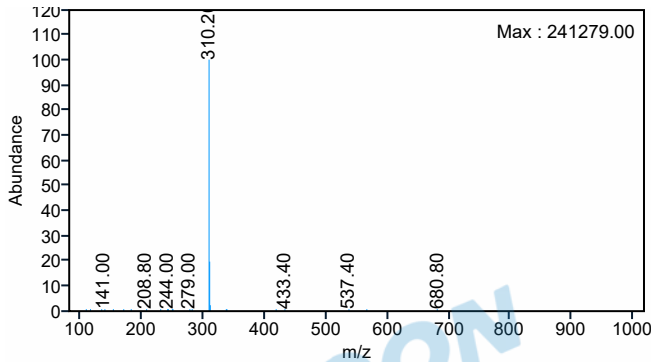
RT [min]	Width [min]	Area	Height	Area%	Plates
11.214	0.044	98923.281	52739.199	0.247	562469
11.322	0.044	89627.162	51167.345	0.224	1236132
11.562	0.035	52284.722	55844.336	0.131	3810295
11.641	0.037	67405.758	57308.227	0.169	3427106
12.039	0.056	104753.326	67387.538	0.262	1251537
12.134	0.050	97267.613	53819.386	0.243	942006
12.375	0.042	78995.518	50802.442	0.198	1366937
12.648	0.037	65134.094	56525.012	0.163	1087965
12.660	0.025	61698.914	51359.782	0.154	93529
12.805	0.035	79113.149	60577.190	0.198	2245359
12.838	0.044	124164.474	76358.563	0.311	3238075
12.877	0.026	56313.818	59076.073	0.141	2302273
12.920	0.036	65190.801	53840.908	0.163	1734450
12.940	0.034	83220.746	70756.261	0.208	2347819
13.219	0.045	97633.096	70191.870	0.244	1961480
13.378	0.062	99124.881	64351.622	0.248	2456230
13.732	0.040	65467.256	51281.769	0.164	2046305
13.950	0.030	50314.532	54446.414	0.126	4603505
	Max	9479471.7832			

Peak Details (Area Percent at least 1%)

Signal Description : MS1 +TIC SCAN ESI Frag=135V Gain=1.0

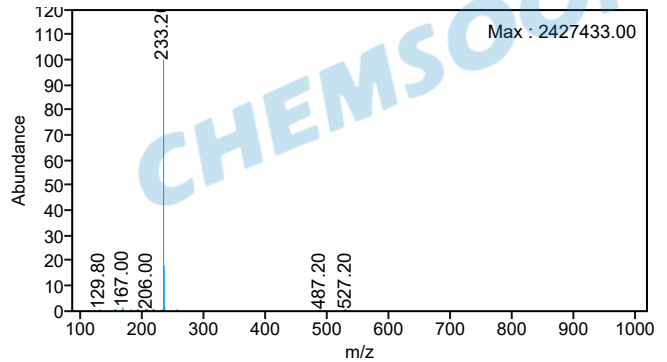
Peak RT : 3.883 min

Area % : 2.04%



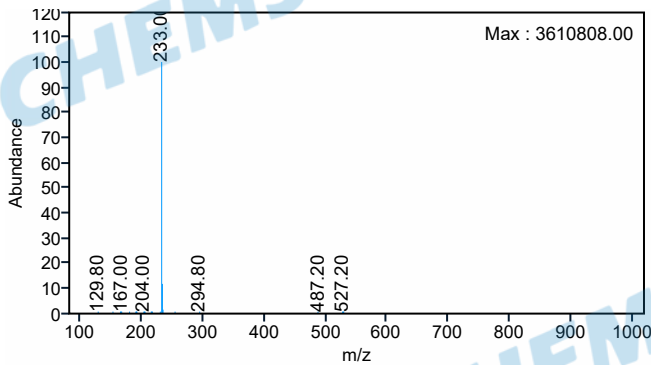
Peak RT : 4.165 min

Area % : 12.79%



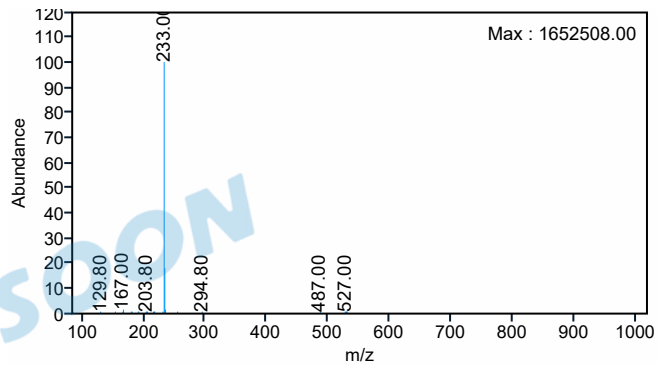
Peak RT : 4.203 min

Area % : 23.71%



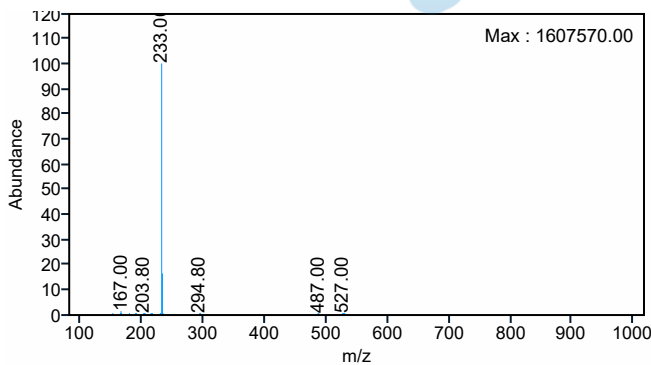
Peak RT : 4.248 min

Area % : 2.60%



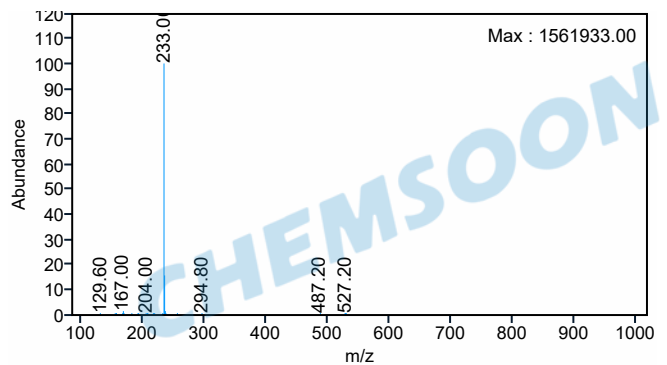
Peak RT : 4.259 min

Area % : 1.27%

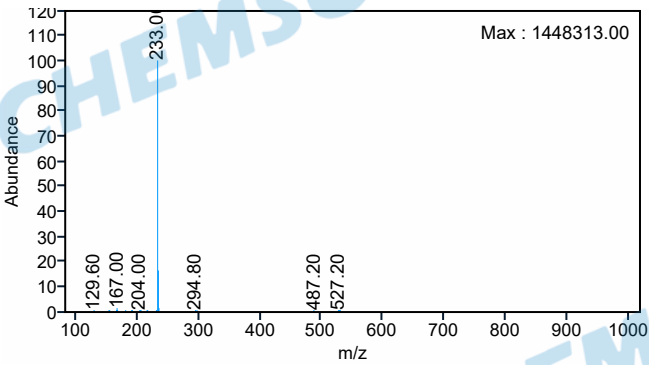


Peak RT : 4.279 min

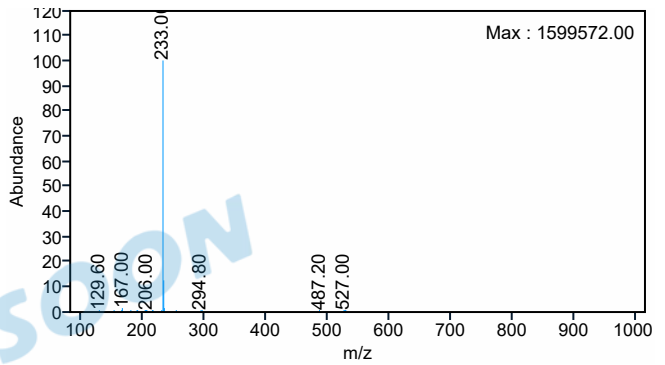
Area % : 2.07%



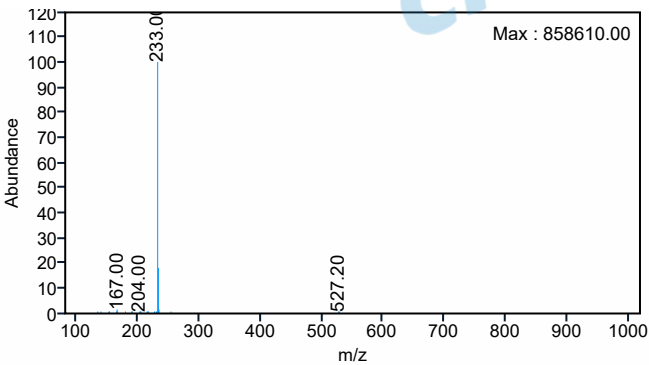
Peak RT : 4.316 min Area % : 1.74%



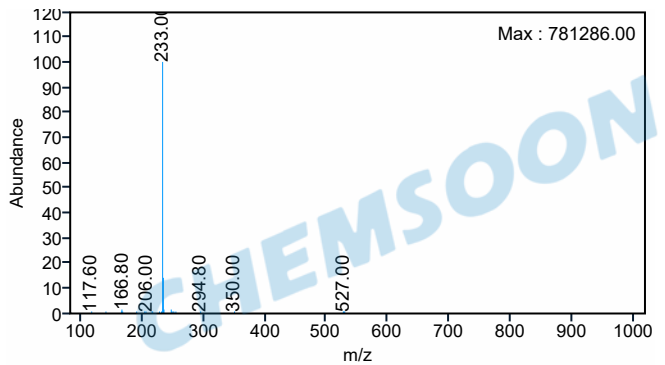
Peak RT : 4.363 min Area % : 1.60%



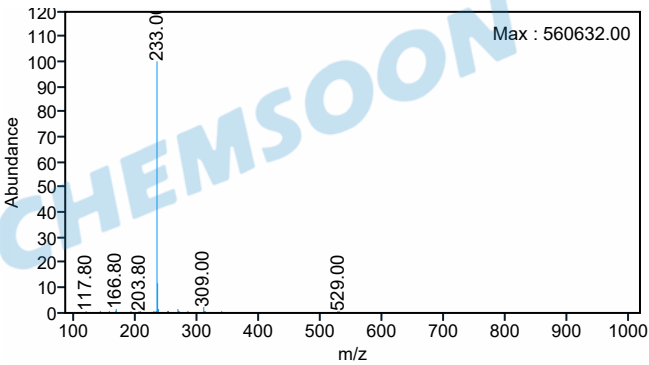
Peak RT : 4.547 min Area % : 1.15%



Peak RT : 4.697 min Area % : 1.14%



Peak RT : 5.226 min Area % : 1.13%



Sample Purity Results

No "Target" had been typed in the Injection list