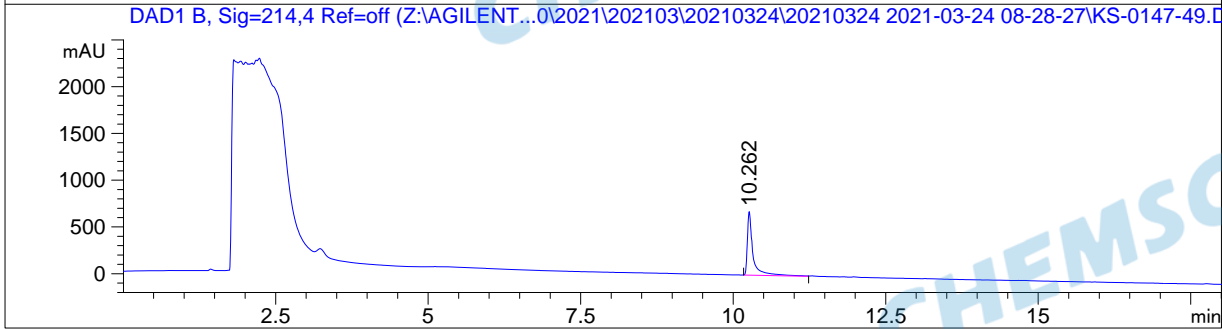
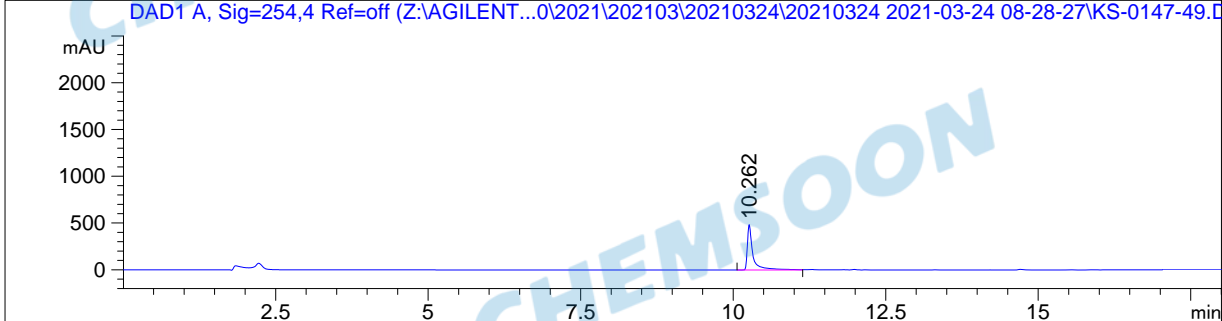


```

=====
Acq. Operator   : 系统                               Seq. Line :   18
Acq. Instrument : Agilent 1200                       Location  : Vial 16
Injection Date  : 3/24/2021 3:29:31 PM              Inj       :    1
                                                    Inj Volume: 5.000 µl

Acq. Method     : D:\DATA\2021\202103\20210324\20210324 2021-03-24 08-28-27\HPLC-1200-A2.M
Last changed    : 3/24/2021 8:28:27 AM by 系统
Analysis Method : C:\CHEM32\1\METHODS\DEF_LC.M
Last changed    : 3/24/2021 1:04:00 PM
                  (modified after loading)
=====
  
```



=====
 Area Percent Report
 =====

```

Sorted By      :      Signal
Multiplier:    :      1.0000
Dilution:      :      1.0000
Use Multiplier & Dilution Factor with ISTDs
  
```

Signal 1: DAD1 A, Sig=254,4 Ref=off

Peak #	RetTime [min]	Type	Width [min]	Area [mAU*s]	Height [mAU]	Area %
1	10.262	BB	0.0907	3110.68091	485.98834	100.0000

Totals : 3110.68091 485.98834

Signal 2: DAD1 B, Sig=214,4 Ref=off

Peak #	RetTime [min]	Type	Width [min]	Area [mAU*s]	Height [mAU]	Area %
1	10.262	BV	0.0913	4393.50977	680.33856	100.0000

Totals : 4393.50977 680.33856

=====
 *** End of Report ***