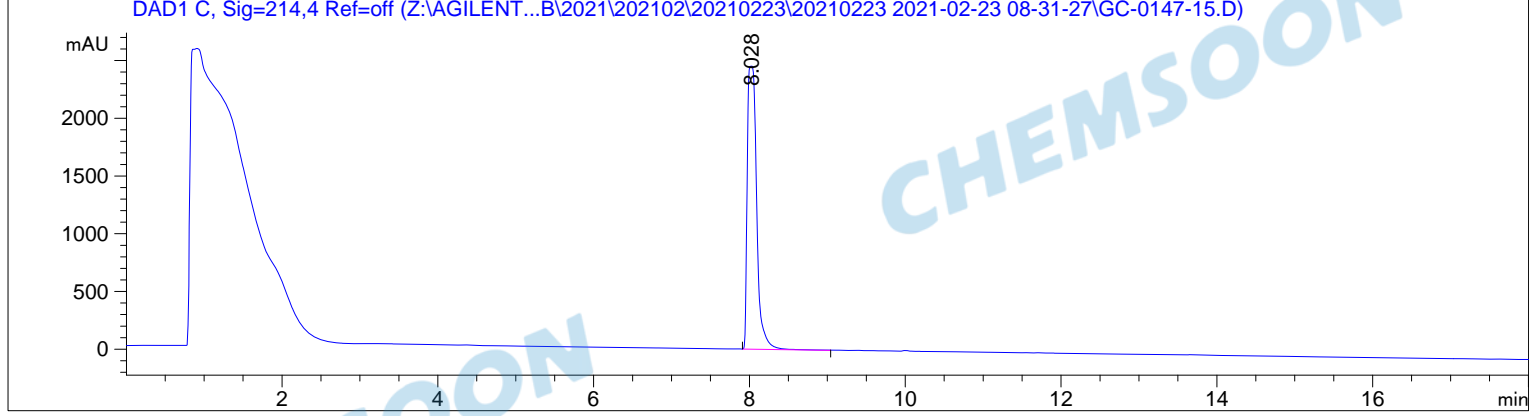
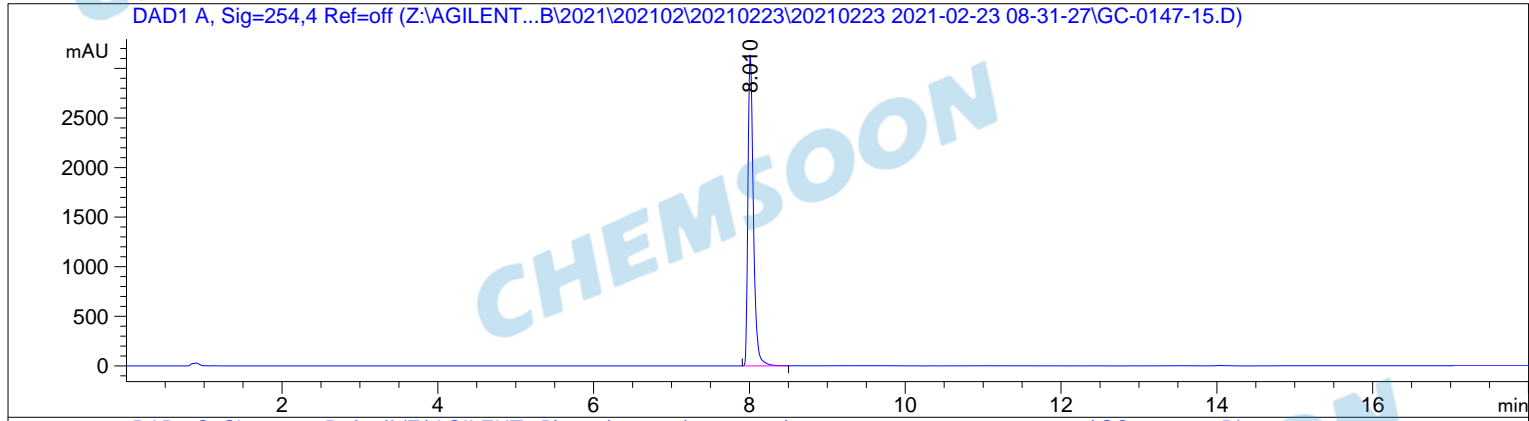


```

=====
Acq. Operator   : qianqianyan                      Seq. Line :   18
Acq. Instrument : LC1260                          Location  : Vial 14
Injection Date  : 2/23/2021 3:20:39 PM           Inj       :    1
                                                    Inj Volume: 2.000 µl
Different Inj Volume from Sequence !      Actual Inj Volume : 5.000 µl
Acq. Method    : D:\DATA\2021\202102\20210223\20210223 2021-02-23 08-31-27\HPLC-01-A2-
                20160118.M
Last changed   : 2/23/2021 8:31:27 AM by qianqianyan
Analysis Method : C:\CHEM32\1\METHODS\DEF_LC.M
Last changed   : 11/20/2006 6:14:44 PM
  
```



=====  
 Area Percent Report  
 =====

```

Sorted By      :      Signal
Multiplier:    :      1.0000
Dilution:      :      1.0000
Use Multiplier & Dilution Factor with ISTDs
  
```

Signal 1: DAD1 A, Sig=254,4 Ref=off

Peak #	RetTime [min]	Type	Width [min]	Area [mAU*s]	Height [mAU]	Area %
1	8.010	VB	0.0747	1.52424e4	3136.70337	100.0000

Totals :                                    1.52424e4    3136.70337

Signal 2: DAD1 C, Sig=214,4 Ref=off

Peak #	RetTime [min]	Type	Width [min]	Area [mAU*s]	Height [mAU]	Area %
1	8.028	VB	0.1178	2.05539e4	2452.49194	100.0000

Totals : 2.05539e4 2452.49194

=====  
\*\*\* End of Report \*\*\*

CHEMSOON

CHEMSOON

CHEMSOON

CHEMSOON

CHEMSOON

CHEMSOON