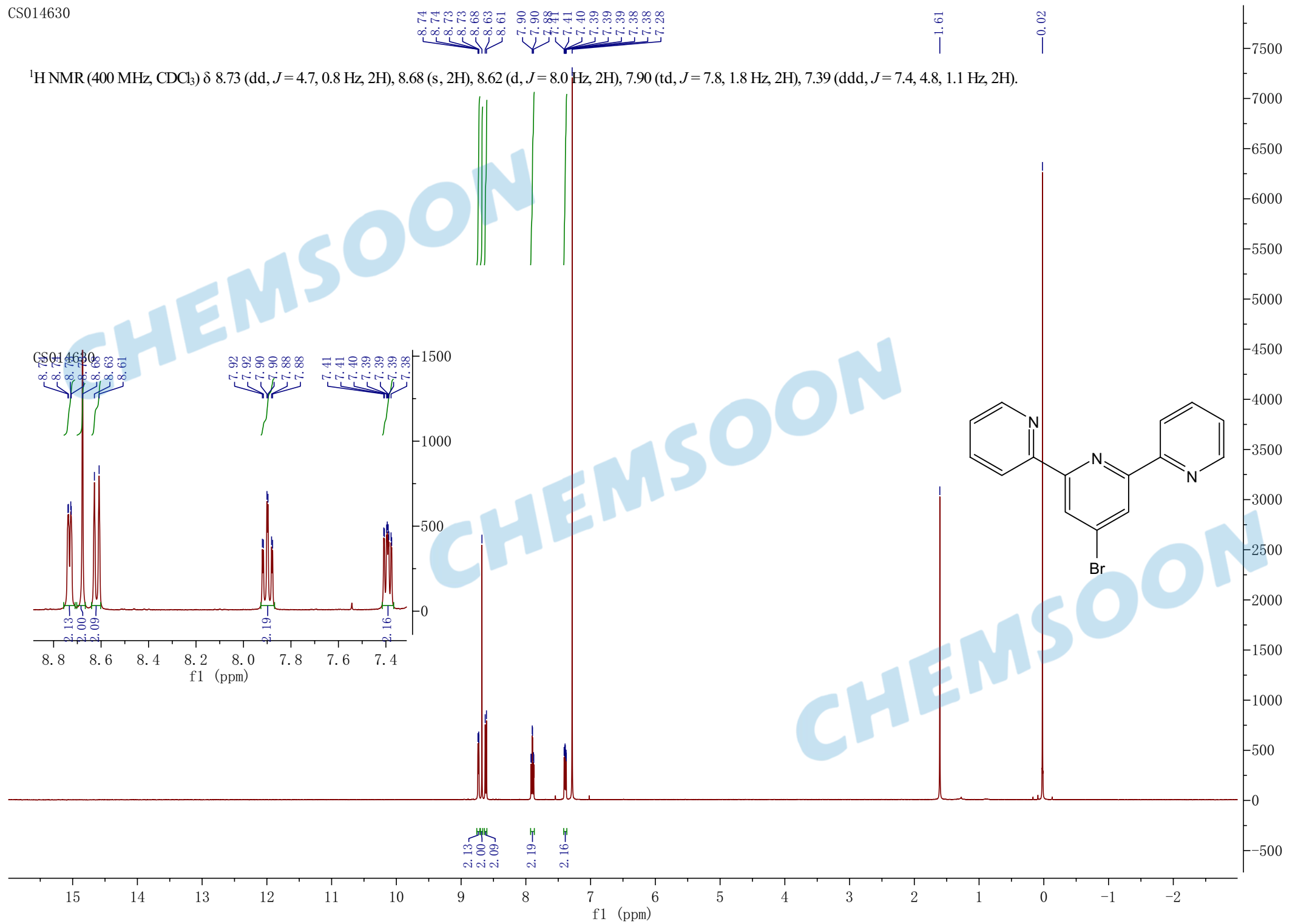


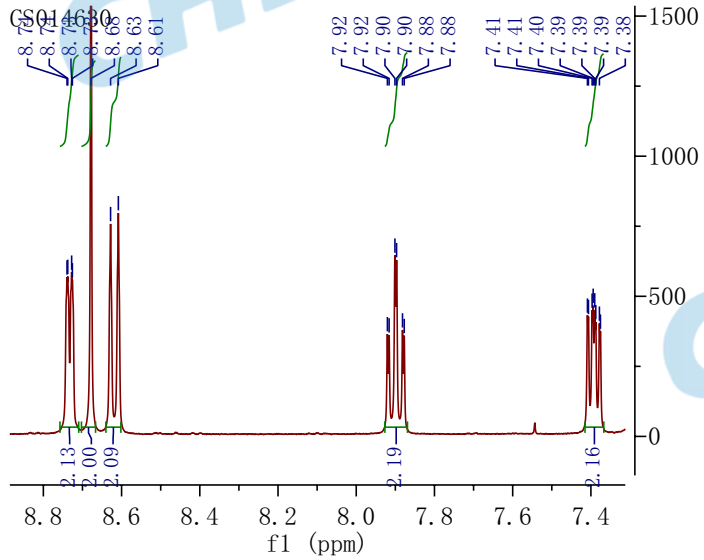
$^1\text{H NMR}$  (400 MHz,  $\text{CDCl}_3$ )  $\delta$  8.73 (dd,  $J = 4.7, 0.8$  Hz, 2H), 8.68 (s, 2H), 8.62 (d,  $J = 8.0$  Hz, 2H), 7.90 (td,  $J = 7.8, 1.8$  Hz, 2H), 7.39 (ddd,  $J = 7.4, 4.8, 1.1$  Hz, 2H).



8.74  
8.74  
8.73  
8.73  
8.68  
8.63  
8.61  
7.90  
7.90  
7.88  
7.88  
7.41  
7.41  
7.40  
7.39  
7.39  
7.39  
7.38  
7.38  
7.28

1.61

0.02



2.13  
2.00  
2.09

2.19

2.16

f1 (ppm)