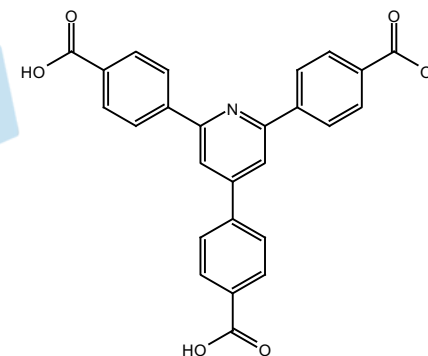
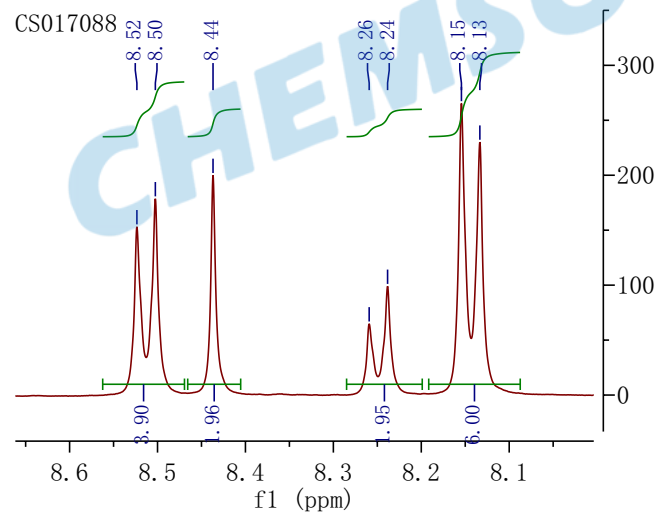


CS017088

13.18

8.52  
8.50  
8.44  
8.26  
8.24  
8.15  
8.133.59  
3.392.53  
2.53  
2.52

0.02

 $^1\text{H NMR}$  (400 MHz, DMSO)  $\delta$  8.51 (d,  $J = 8.4$  Hz, 4H), 8.44 (s, 2H), 8.25 (d,  $J = 8.4$  Hz, 2H), 8.14 (d,  $J = 8.4$  Hz, 6H).

16 15 14 13 12 11 10 9 8 7 6 5 4 3 2 1 0 -1 -2 -3 -4

f1 (ppm)

280  
260  
240  
220  
200  
180  
160  
140  
120  
100  
80  
60  
40  
20  
0  
-20