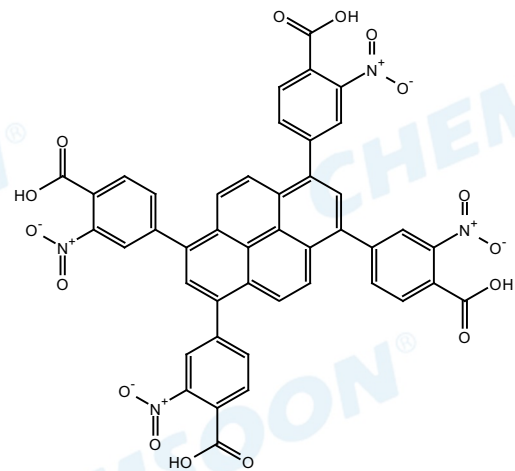


CS018362

$^1\text{H NMR}$  (300 MHz,  $\text{dms-}d_6$ )  $\delta$  8.24 (t,  $J = 6.6$  Hz, 6H), 8.18 – 7.99 (m, 12H).



8.26  
8.24  
8.21  
8.11  
8.09  
8.04

3.39  
2.50  
2.49  
2.48  
2.48

2300  
2200  
2100  
2000  
1900  
1800  
1700  
1600  
1500  
1400  
1300  
1200  
1100  
1000  
900  
800  
700  
600  
500  
400  
300  
200  
100  
0  
-100  
-200



6.00  
12.08

15 14 13 12 11 10 9 8 7 6 5 4 3 2 1 0 -1

f1 (ppm)