

CS017851

13.07

8.27  
8.27  
8.13  
8.13  
8.11  
8.10  
8.09  
8.08

3.40

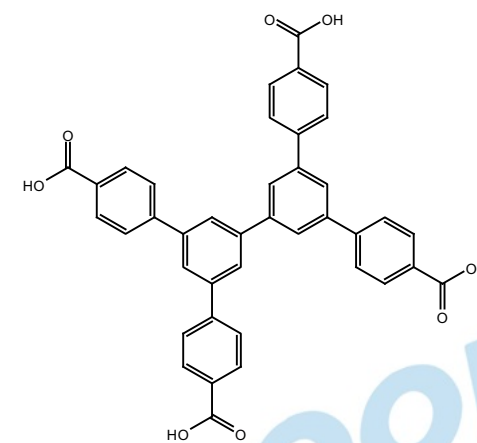
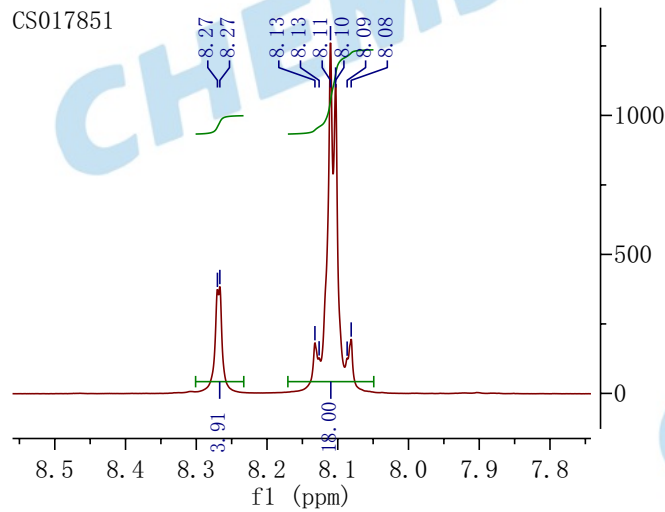
2.53  
2.52  
2.51

0.01

$^1\text{H NMR}$  (400 MHz, DMSO)  $\delta$  8.27 (d,  $J = 1.4$  Hz, 4H), 8.17 – 8.05 (m, 18H).

CS017851

8.27  
8.27  
8.13  
8.13  
8.11  
8.10  
8.09  
8.08



16 15 14 13 12 11 10 9 8 7 6 5 4 3 2 1 0 -1 -2 -3 -4  
f1 (ppm)

3.91  
18.00

1300  
1200  
1100  
1000  
900  
800  
700  
600  
500  
400  
300  
200  
100  
0  
-100