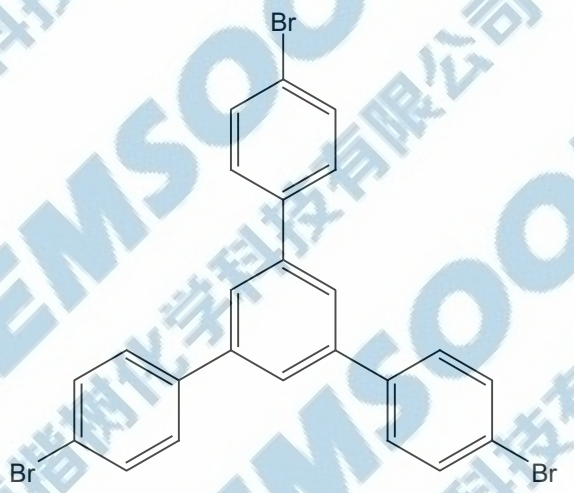
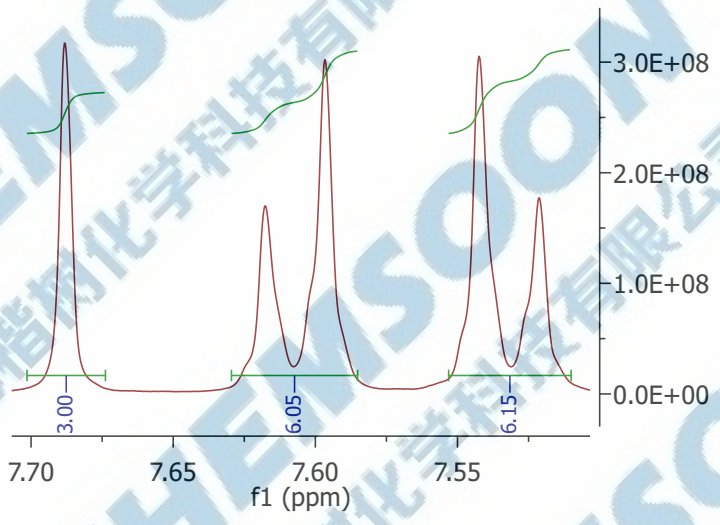


$^1\text{H NMR}$ (400 MHz, CDCl_3) δ 7.69 (s, 3H), 7.61 (d, $J=8.4$ Hz, 6H), 7.53 (d, $J=8.4$ Hz, 6H).

7.69
7.62
7.60
7.54
7.52



3.00
6.05
6.15

16 15 14 13 12 11 10 9 8 7 6 5 4 3 2 1 0 -1 -2 -3 -4
f1 (ppm)

3.4E+08
3.2E+08
3.0E+08
2.8E+08
2.6E+08
2.4E+08
2.2E+08
2.0E+08
1.8E+08
1.6E+08
1.4E+08
1.2E+08
1.0E+08
8.0E+07
6.0E+07
4.0E+07
2.0E+07
0.0E+00
-2.0E+07