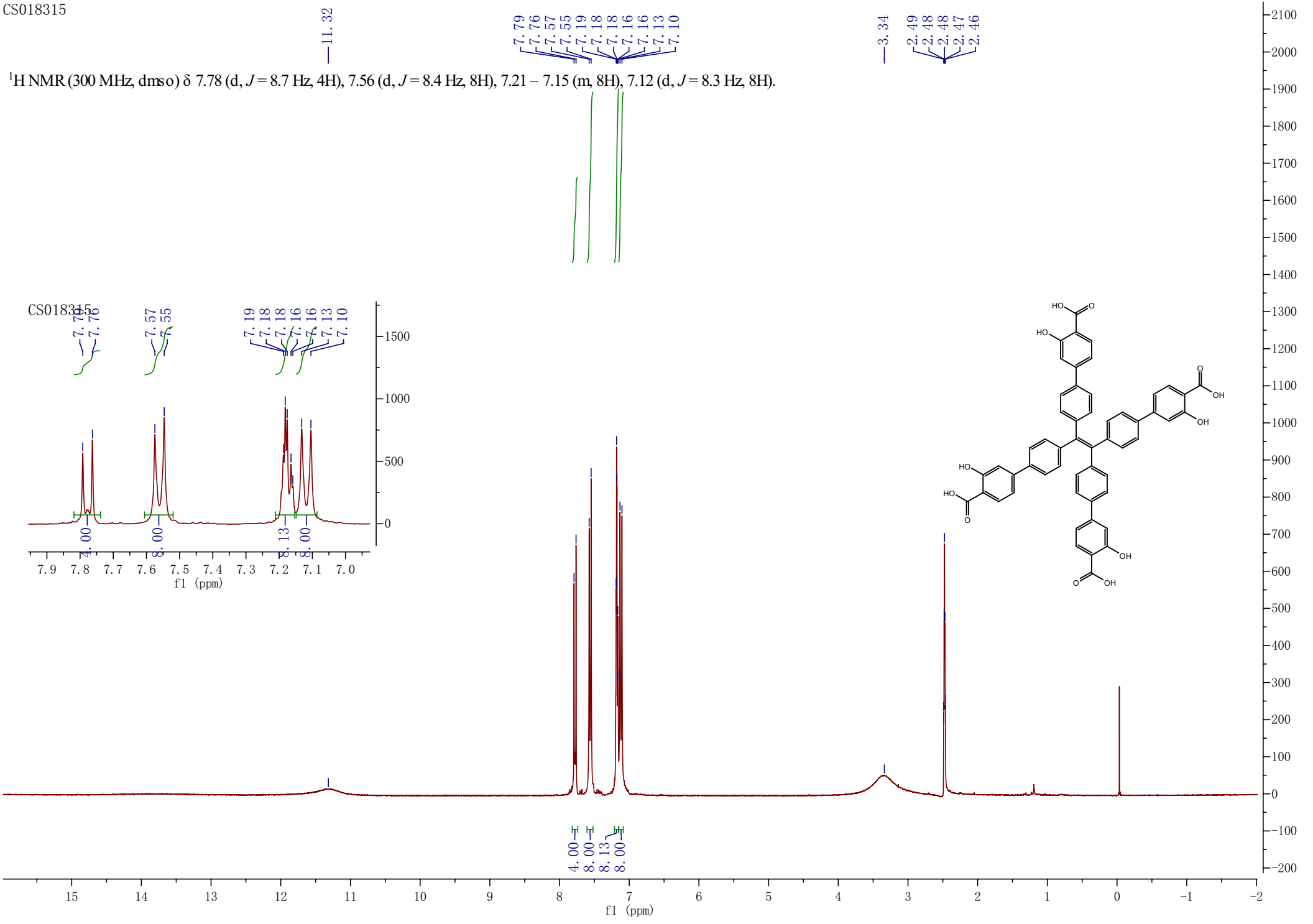


CS018315

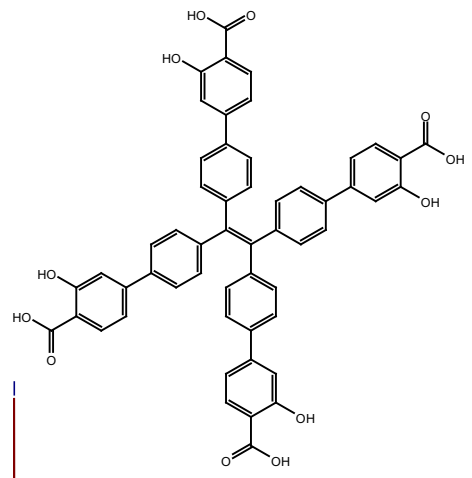
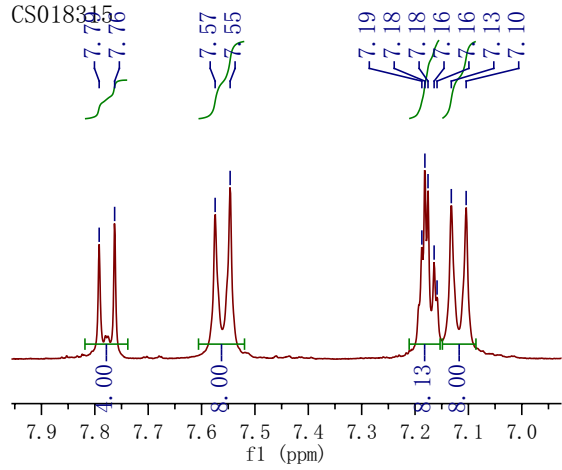
$^1\text{H NMR}$  (300 MHz, dms $\text{o}$ )  $\delta$  7.78 (d,  $J$  = 8.7 Hz, 4H), 7.56 (d,  $J$  = 8.4 Hz, 8H), 7.21 – 7.15 (m, 8H), 7.12 (d,  $J$  = 8.3 Hz, 8H).



—11.32

7.79  
7.76  
7.57  
7.55  
7.19  
7.18  
7.18  
7.16  
7.16  
7.13  
7.10

—3.34  
2.49  
2.48  
2.48  
2.47  
2.46



4.00  
8.00  
8.13  
8.00