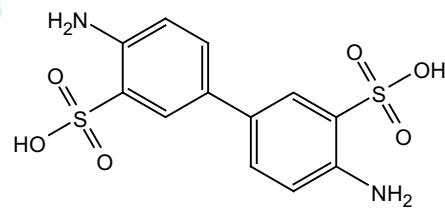


CS014612

$^1\text{H NMR}$  (400 MHz,  $\text{dms-}d_6$ )  $\delta$  7.88 (s, 2H), 7.64 (d,  $J = 8.0$  Hz, 2H), 7.24 (d,  $J = 5.1$  Hz, 2H).



7.88  
7.65  
7.63  
7.24  
7.23

2.48  
2.48

1.21

-0.02

2.00  
2.08  
2.47

