

CS017079

—12.94

—9.08

7.97

7.95

7.75

7.73

7.34

7.32

7.16

7.14

6.57

6.56

6.55

6.55

—3.34

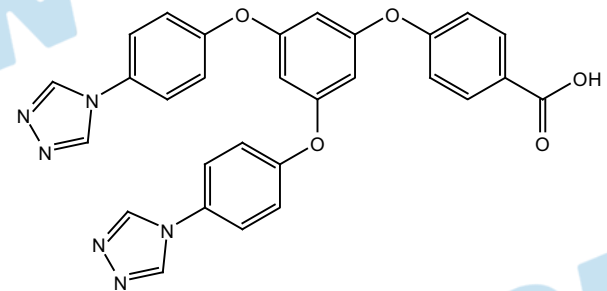
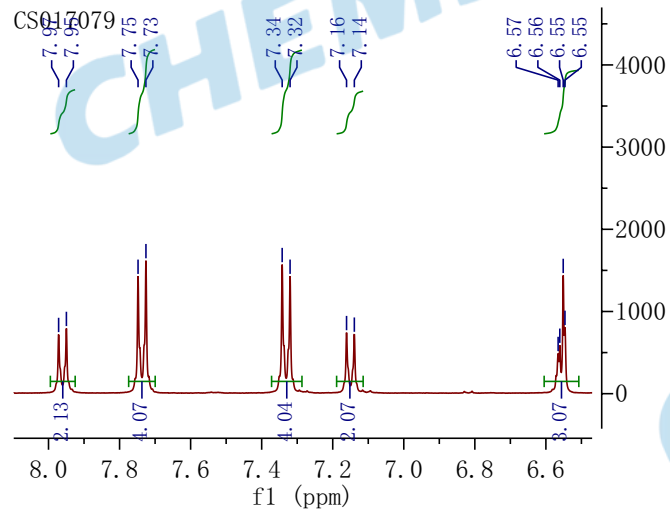
2.51

2.51

2.50

—0.00

$^1\text{H NMR}$  (400 MHz, DMSO)  $\delta$  12.94 (s, 1H), 9.08 (s, 4H), 7.96 (d,  $J=8.8$  Hz, 2H), 7.74 (d,  $J=8.9$  Hz, 4H), 7.33 (d,  $J=8.9$  Hz, 4H), 7.15 (d,  $J=8.8$  Hz, 2H), 6.56 (dd,  $J=5.8, 1.9$  Hz, 3H).



16 15 14 13 12 11 10 9 8 7 6 5 4 3 2 1 0 -1 -2 -3

f1 (ppm)

1.10

4.00

2.13

4.07

4.04

2.07

3.07

4500

4000

3500

3000

2500

2000

1500

1000

500

0